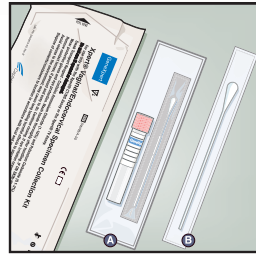
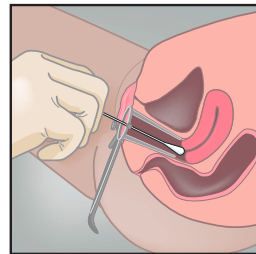


Endocervical Specimen Collection

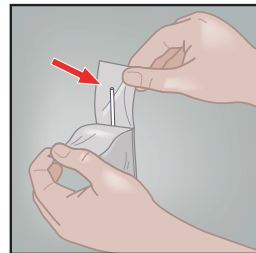
1
 The Xpert Vaginal/Endocervical Specimen Collection kit contains
 A Individual Collection Kit
 B Cleaning Swab



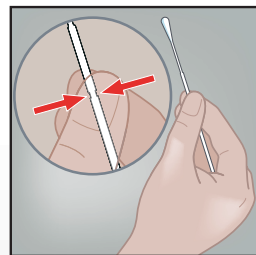
2
 Partially peel open the cleaning swab wrapper and remove the swab.
 Remove excess mucus from the cervical os and surrounding mucosa using the large individually wrapped cleaning swab B.
 Discard the swab.



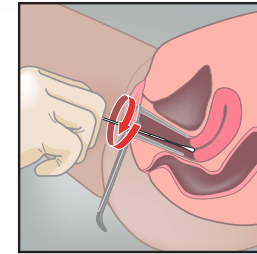
3
 Open package A that contains the pink-capped Xpert Swab Transport Reagent tube and the individually wrapped collection swab. Set the tube aside before beginning to collect sample. Open the collection swab wrapper by peeling open the top of the wrapper. Remove the swab, taking care not to touch the tip or lay it down. If the soft tip is touched, the swab is laid down, or the swab is dropped, use a new Xpert Vaginal/Endocervical Specimen Collection Kit.



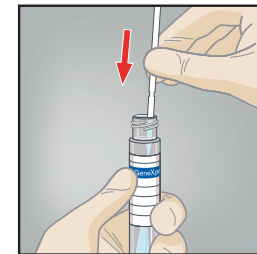
4
 Hold the swab in your hand, placing your thumb and forefinger in the middle of the swab shaft.



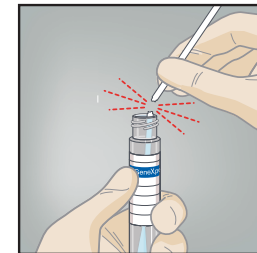
5
 Insert the collection swab into the endocervical canal. Gently rotate the swab clockwise for 10-30 seconds in the endocervical canal. Withdraw the swab carefully.



6
 While holding the swab in the same hand, unscrew the cap from the Xpert Swab Transport Reagent tube. Do not spill the contents of the tube. If the contents of the tube are spilled, use a new collection kit.
 Immediately place the specimen collection swab into the transport reagent tube.

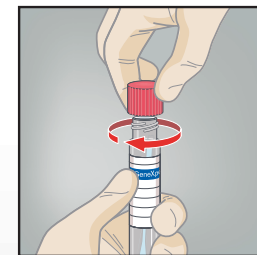


7
 Identify the scoreline on the collection swab shaft. Carefully break the swab shaft against the side of the tube at the scoreline. Discard the top portion of the swab shaft.



Use care to avoid splashing the contents. Wash with soap and water if exposed.

8
 Re-cap the swap transport reagent tube and tighten the cap securely. Invert or gently shake the tube 3-4 times to elute material from the swab. Avoid foaming.



Label the transport tube with the sample identification information, including date of the collection, as required.