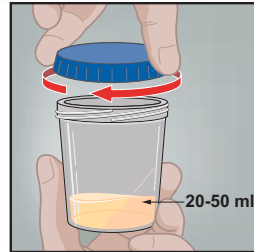
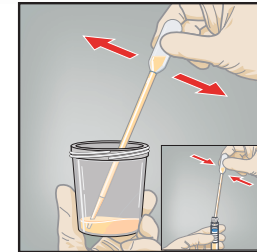


Urine Specimen Collection (First Catch)

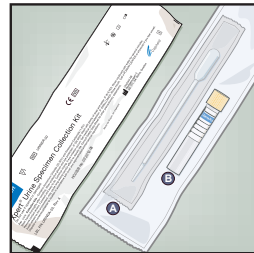
- 1 Direct patient to provide first-catch urine (20-50mL) into a urine collection cup.
- Note: The patient should not have urinated for at least 1 hour prior. Patient should not cleanse the genital area prior to collecting specimen.



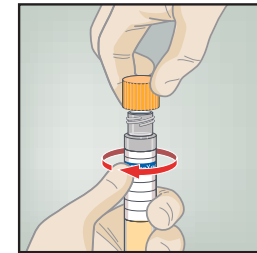
- 5 Transfer approximately 7mL of urine into the transport tube, using the disposable transfer pipette. The correct volume is marked by the black dashed line on the label.



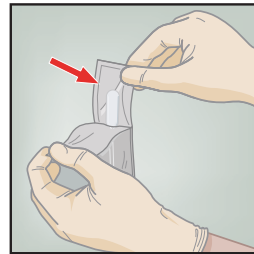
- 2 The Xpert® Urine Specimen Collection kit contains
- A Large, disposable transfer pipette
 - B Urine Transport Reagent tube



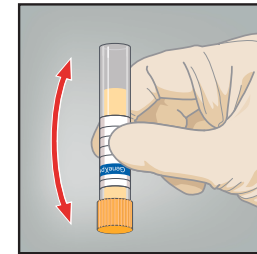
- 6 Replace the yellow cap on the transport tube and tighten securely.



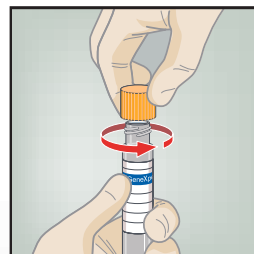
- 3 Open the package of disposable transfer pipette provided in the kit.



- 7 Invert the transport tube 3-4 times to ensure that the specimen and reagent are well mixed.



- 4 Remove the yellow cap from the transport tube.



- 8 Return the tube as instructed by your doctor, nurse or care-provider.
- Note: Health care provider should label the transport tube with the sample identification information, including date of the collection, as required.

