



UNIVERSITY HEALTHCARE

LAB ALERT

RL Ryan H. Livengood M.D., Medical Director
 Department of Pathology and Laboratory Services

Change in Stool Testing at BMC and JMC Effective July 19, 2017

On July 19, 2017 the Microbiology laboratory will begin running the FilmArray gastrointestinal panel. The FilmArray GI panel replaces the traditional stool culture, Shiga toxin antigen, Campy antigen, Giardia/Crypto antigen, and ova and parasite screening. Susceptibilities will be provided for Shigella isolates.

The same restrictions apply to the FilmArray GI panel as did the stool culture. Stools that are soft and conform to the container, or liquid stools are acceptable specimens. Stools from a patient hospitalized for >3 days, hard solid stools, and colonic washes will be rejected.

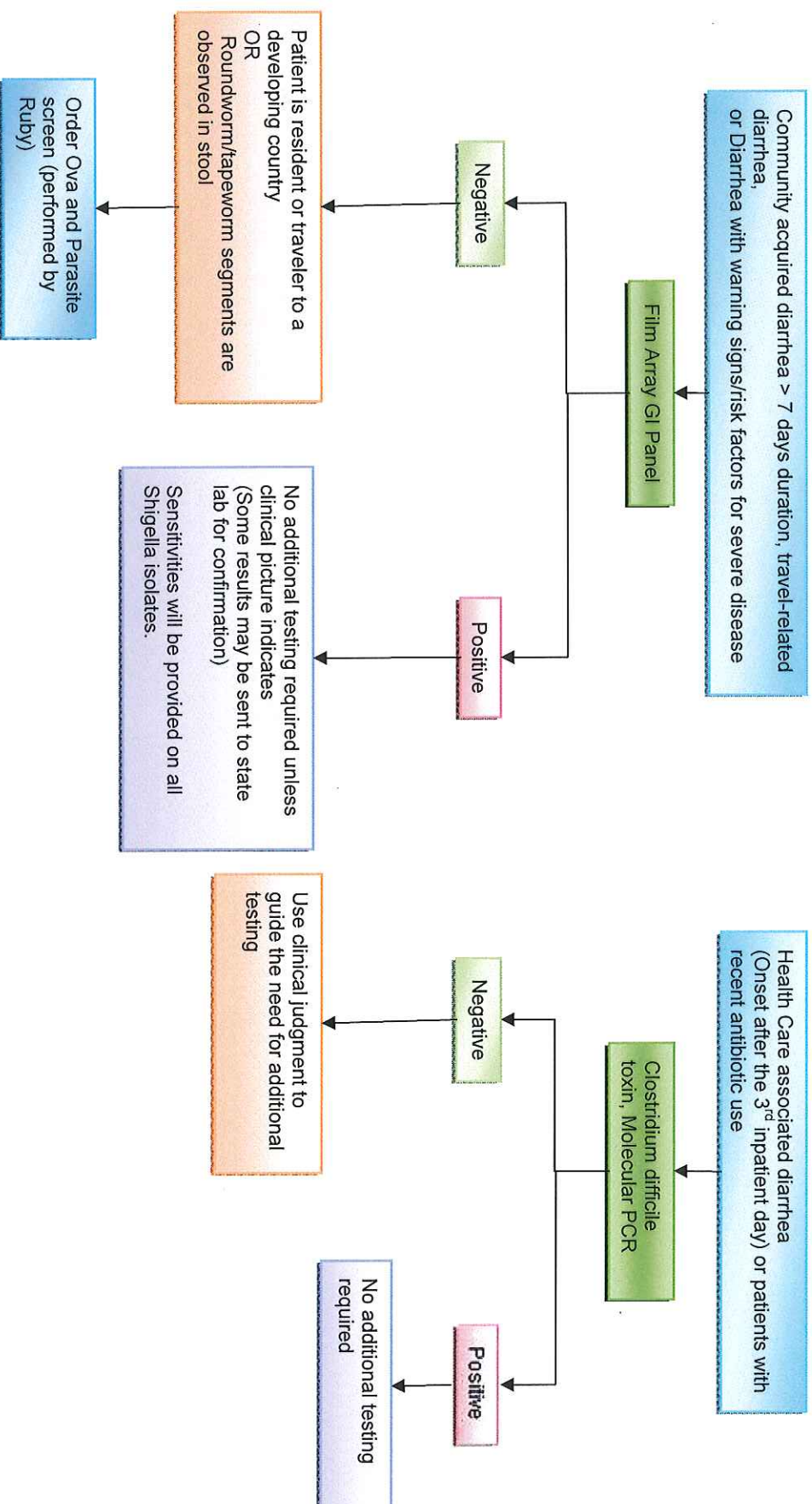
All stool culture orders received after this change will be converted to the FilmArray GI Panel. Please see the attached flowchart for stool testing algorithm.

Organism	Critical	Organism	Critical
Campylobacter (jejuni, coli, and upsaliensis)		Shigella/Enteroinvasive E. coli (EIEC)	Yes
Clostridium difficile (toxin A/B)		Cryptosporidium	
Plesiomonas shigelloides		Cyclospora cayetanensis	
Salmonella	Yes	Entamoeba histolytica	
Yersinia enterocolitica		Giardia lamblia	
Vibrio (parahaemolyticus, vulnificus, and cholerae)	Yes	Adenovirus F 40/41	
Vibrio cholerae	Yes	Astrovirus	
Enteraggregative E. coli (EAEC)		Norovirus GI/GII	
Enteropathogenic E. coli (EPEC)		Rotavirus A	
Enterotoxigenic E. coli (ETEC) lt/st		Sapovirus (I, II, IV, V)	
Shiga-like toxin-producing E. coli (STEC) stx1/stx2	Yes		
E. coli O157	Yes		

PCR testing is more sensitive than traditional techniques and allows for the detection of low numbers of pathogens. Results of PCR testing for stool pathogens are an aid to diagnosis and must be taken into clinical context for treatment decisions.

*If you have any questions call BMC at 304-264-1212, option # 7.

Lab Testing for Infectious Causes of Diarrhea



The FilmArray GI panel replaces the traditional stool culture, Shiga toxin antigen, Campy antigen, Giardia/Crypto antigen, and ova and parasite screening. Susceptibility testing will only be performed on Shigella isolates. GI panel orders received from patients hospitalized for >3days will be rejected, unless the patient is known to be positive for human immunodeficiency virus (HIV). Formed stools and colonic washes will also be rejected. Fresh diarrheal stool in a clean cup is the only acceptable specimen type.